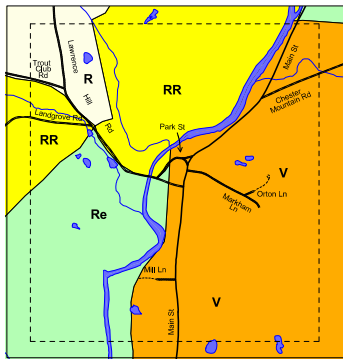
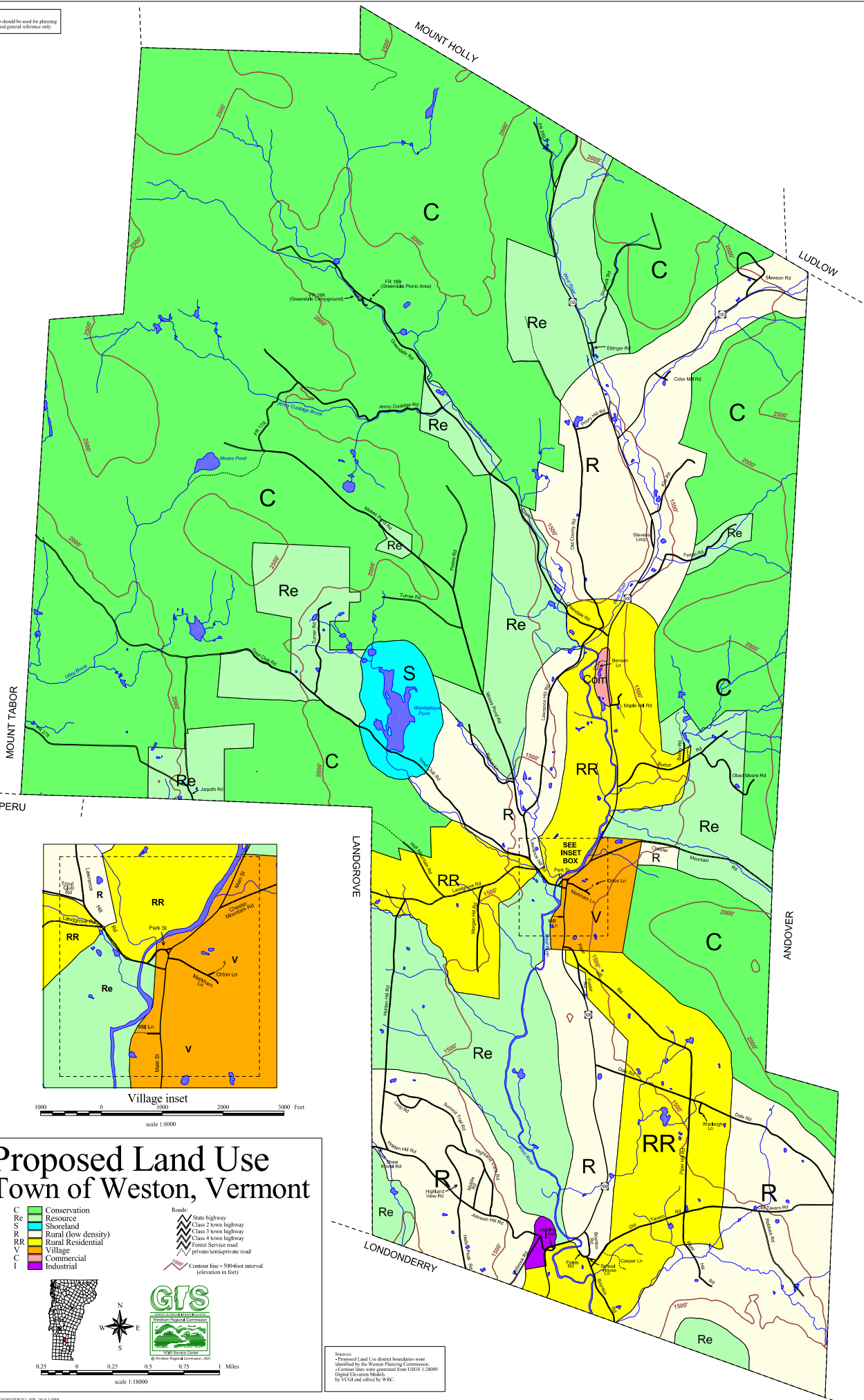


Note:
 * This map should be used for planning purposes and general reference only.

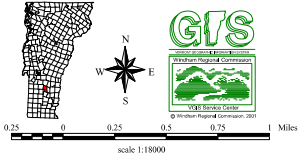


Village inset
 scale 1:8000

Proposed Land Use Town of Weston, Vermont

- C Conservation
- Re Resource
- S Shoreland
- R Rural (low density)
- RR Rural Residential
- V Village
- C Commercial
- I Industrial

- Roads:
 - State highway
 - Class 2 town highway
 - Class 3 town highway
 - Class 4 town highway
 - Forest Service road
 - private/semi-private road
- Contour line = 500-foot interval (elevation in feet)



Source:
 * Proposed Land Use district boundaries were identified by the Weston Planning Commission.
 * Contour lines were generated from USGS 1:24000 Digital Elevation Models.
 * by VCCG and edited by WRC.